

**MIVA[®] Payment Method
Configuration and Setup for
e-ValuCheck and Miva Merchant**

v 4.16 and v 4.2x

Table of Contents

Introduction.....	2
Requirements	2
Begin Setup Guide	Error! Bookmark not defined.
Text Only Quick Setup.....	3
Step by Step Instructions.....	5




Introduction

Thank you for your interest in the e-ValuCheck online check processing solution. As a Miva Merchant store owner, accepting checks online has never been easier than using the integrated Miva and e-ValuCheck payment processing module. This document provides a detailed step by step guide to setting up your new e-ValuCheck payment method. Please read through all the steps one time to familiarize yourself with the process before configuring your store.

Requirements

Before continuing be sure that you meet the following requirements:

- 1) You are using Miva Merchant version 4.16 or greater (released November 1, 2002)
- 2) Your Miva host company is using Miva Virtual Machine version 4.02 or greater (released September 1, 2002)
- 3) You have already received your e-ValuCheck Merchant ID by completing the online application at https://www.evalucheck.net/merchant_app.html?iso=62112. You can also get there by completing the following steps:
 - Go to the Miva Administration web page
 - Select Configure Payment
 - Choose e-ValuCheck from the Payment Module pull-down menu
 - Click Next 
 - Choose the Sign-Up NOW! option

The rest of this document will guide you screen-by-screen through the payment configuration wizard. Once you have completed this setup, your Miva store will be ready to accept checks. We recommend that you conduct a couple of simple test store checkouts using the "check" payment option. Customers choosing this payment method will automatically be directed through the e-ValuCheck payment gateway upon checkout. As a e-ValuCheck merchant, you will automatically receive payment for funds collected based upon the preferences you specified during merchant sign-up.

If you have any questions about configuring or using e-ValuCheck with your Miva store, please contact us via email at support@evalucheck.com or by calling (877) 382-5824..



Text Only Quick Setup

1. After receiving confirmation of your new Merchant ID from e-ValuCheck, login to the Miva Administration interface and Switch to Advanced Administration.
2. Drop down through the Stores menu, Your Store Name menu item to the Payment Configuration menu item.
3. Choose e-ValuCheck from the Payment Module list. Then click Update.
4. The e-ValuCheck Site Information blue hyper-link will appear at the top of the page in the Modules section. Click the e-ValuCheck Site Information hyper-link.
5. Leave the Exchange ID blank, and enter your e-ValuCheck assigned Merchant ID and password. Remember: Your password was entered during the "Merchant Signup" process. Contact customer support at (877) 382-5824 if you have lost or forgotten your password.
6. Leave the URL as is: <https://evalucheck.net/default>.
7. Type in a custom Transaction Error Message that will be displayed for your customer on the payment information screen in an event that a payment will be rejected by e-ValuCheck.
8. Review the Merchant Information, and correct as desired, then click Update.
9. Click the e-ValuCheck Merchant Information hyper-link located at the top of the page in the Modules section immediately to the right of the previously selected e-ValuCheck Site Information hyper-link.
10. Review and edit the Merchant Information as needed.
11. Review and edit the Technical Contact information.

Edit the return URLs. Once the user has completed the e-ValuCheck check validation, e-ValuCheck will redirect the user back to an INTERNET MERCHANT URL. Three INTERNET MERCHANT URLs will need to be established: **See next page for examples.**

- a. **Hidden Confirmation URL** - A 'hidden' script that serves as a redundant confirmation of the successful transaction. Prior to the user being redirected back to INTERNET MERCHANT success/approval page, the e-ValuCheck application server will HTTP POST to a 'hidden' INTERNET MERCHANT script the confirmed transaction confirmation.
- b. **Success Redirect URL** - A script that displays a check verification approval page, confirmation of the consumer's INTERNET MERCHANT account balance and offering the user a link or links to several of the INTERNET MERCHANT member web sites.
- c. **Reject Redirect URL** - A script that displays a PICK ANOTHER PAYMENT option for those users who are not confirmed by the system (bad risk consumers).

No need to change the Operator1, Operator2, and Coefficient values.



Text Only Quick Setup-Continued

Examples:

Hidden Confirmation URL

<http://www.ebagswholesale.com/Merchant2/evalcheckp.mvc?>

<https://secure.hosting.com/ebagswholesale/Merchant2/evalcheckp.mvc?>

Success Redirect URL

<http://www.ebagswholesale.com/Merchant2/evalchecki.mvc?>

<https://secure.hosting.com/ebagswholesale/Merchant2/evalchecki.mvc?>

Reject Redirect URL

<http://www.ebagswholesale.com/Merchant2/evalchecki.mvc?>

<https://secure.hosting.com/ebagswholesale/Merchant2/evalchecki.mvc?>

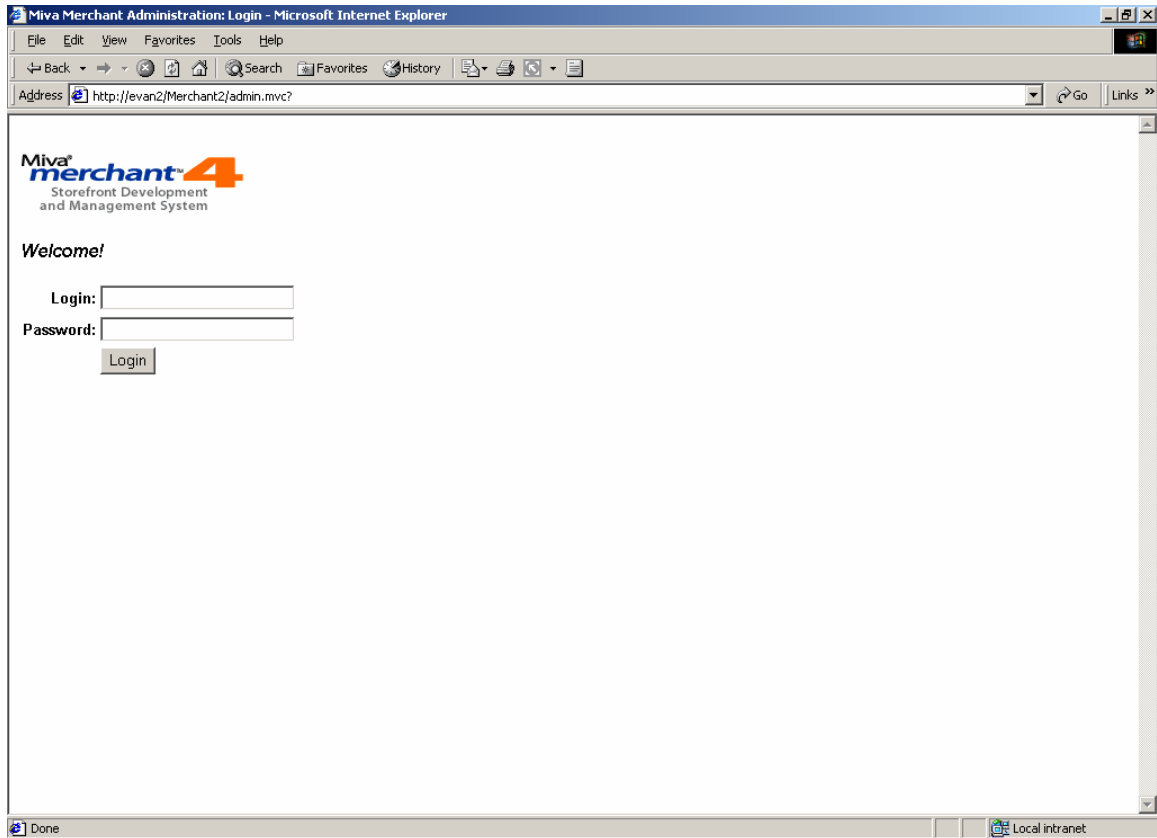
13. Click Update.
14. You are ready to begin testing the e-ValuCheck payment process. Initially, the e-ValuCheck module is in TEST mode. You may conduct a purchase transaction through the MIVA store, select Check Payment as the payment option, and complete an e-ValuCheck payment. These items will be processed as test transactions. If you encounter any problems, call the e-ValuCheck support line at (877) 382-5824..
15. When testing is completed successfully and you are ready to begin accepting LIVE check payments, logon to the e-ValuCheck merchant administration interface located at <https://evalucheck.net/merchant.html>.
16. Click the "Activate" button to ACTIVATE your account. You may revert back to TEST mode in the future by logging on again and clicking the "TEST Mode" button.

Note: You MUST disable the "Require Shipping" and "Require Tax" settings located in admin/store/settings tab.



Step by Step Instructions

1. After receiving confirmation of your new Merchant ID from e-ValuCheck, login to the Miva Administration interface and Switch to Advanced Administration.



Step by Step Instructions-Continued

- Drop down through the Stores menu, Your Store Name menu item to the Payment Configuration menu item.

Miva Merchant Administration: administrator - Microsoft Internet Explorer

File Edit View Favorites Tools Help

Address http://evan2/Merchant2/admin.mvc?Session_ID=de094d4bb3ef8b266e1fdd80e441a728&

MAIN DOCS SUPPORT LOGOUT

Refresh
Main
Domain Settings
Store Selection Layout
Users
Modules
Wizards
Stores
Add Store
test
Wizards
Groups
Countries
States
Categories
Products
Marketing
Attribute Templates
Upsale
Inventory
Affiliate Configuration
Shipping Configuration
Payment Configuration
Order Fulfillment Configuration
Logins Configuration
System Extension Configuration
Customers
Availability Groups
Price Groups
Order Processing
Utilities
Switch to Simple Administration
About Miva Merchant
Logout

Miva Merchant v4.17
Miva Engine v4.0702

There were 0 failed login attempts since your last login.


Miva Merchant Quick Start

Domain Name: **evan2**

Domain Notifications [Check For New Notifications Now](#)

[GET IT ALL for only \\$795](#)
[Compiler and MMLSK for only \\$299. You Save \\$1,091](#)
[Only 2 weeks left for May 03 Specials](#)
[Miva Newsletter, 08 May 2003](#)
[Get Three Additional Store Licenses FREE](#)

The most common tasks may be accomplished using Wizards. To evoke a Wizard, click the icon above the desired Wizard.


[Create Store Wizard](#)

Store Name: **test**

Local intranet



Step by Step Instructions-Continued

3. Choose e-ValuCheck from the Payment Module list. Then click Update.

The screenshot shows a Microsoft Internet Explorer browser window displaying the Miva Merchant Administration interface. The address bar shows the URL: http://evan2/Merchant2/admin.mvc?Session_ID=61e14cc8281c681efdc7e91414bfafaa&. The page title is "Miva Merchant Administration: administrator".

The interface has a navigation menu on the left with categories like Refresh, Main, Domain Settings, Store Selection Layout, Users, Modules, Wizards, and Stores. The "Payment Configuration" page is active, showing a list of modules under the heading "Assigned Module".

Assigned Module
<input type="checkbox"/> Miva Payment
<input type="checkbox"/> PayQuake
<input type="checkbox"/> U.S. Merchant Systems
<input type="checkbox"/> R-P-G (Rodopi Payment Gateway)
<input type="checkbox"/> E-Commerce Exchange/QuickCommerce 3.0 Payment Gateway
<input type="checkbox"/> PayPal Instant Payment Notification
<input type="checkbox"/> Verisign Payflow Pro (PaymentNet)
<input type="checkbox"/> Verisign Payflow Link
<input type="checkbox"/> Paradata Payment Service
<input type="checkbox"/> Credit Card Payment With Simple Validation
<input type="checkbox"/> Lynk Internet Processing
<input type="checkbox"/> Cardservice/LinkPoint Payment Gateway
<input type="checkbox"/> Innovative Gateway Solutions
<input type="checkbox"/> ICPS (The Internet Cash Payment System)
<input type="checkbox"/> CyberSource ICSv2 Payment Services
<input type="checkbox"/> GlobalCommerce Payment Gateway
<input checked="" type="checkbox"/> e-ValuCheck - Accept checks for immediate shipment
<input type="checkbox"/> Moneris e-SELECT Payment Service
<input type="checkbox"/> COD



Step by Step Instructions-Continued

The screenshot displays the Miva Merchant Administration interface in a Microsoft Internet Explorer browser window. The address bar shows the URL: `http://evan2/Merchant2/admin.mvc?Session_ID=de094d4bb3ef8b266e1fdd80e441a728&`. The interface includes a navigation menu on the left with categories like Refresh, Main, Domain Settings, Store Selection Layout, Users, Modules, Wizards, Stores, and Utilities. The main content area is titled "MIVA" and contains a list of payment gateway options, each with a checkbox. The "e-ValuCheck - Accept checks for immediate shipment" option is selected. At the bottom right of the configuration area, there are "Update" and "Reset" buttons.

Payment Gateway	Selected
<input type="checkbox"/> PayQuake	No
<input type="checkbox"/> U.S. Merchant Systems	No
<input type="checkbox"/> R-P-G (Rodopi Payment Gateway)	No
<input type="checkbox"/> E-Commerce Exchange/QuickCommerce 3.0 Payment Gateway	No
<input type="checkbox"/> PayPal Instant Payment Notification	No
<input type="checkbox"/> Verisign Payflow Pro (PaymentNet)	No
<input type="checkbox"/> Verisign Payflow Link	No
<input type="checkbox"/> Paradata Payment Service	No
<input type="checkbox"/> Credit Card Payment With Simple Validation	No
<input type="checkbox"/> Lynk Internet Processing	No
<input type="checkbox"/> Cardservice/LinkPoint Payment Gateway	No
<input type="checkbox"/> Innovative Gateway Solutions	No
<input type="checkbox"/> ICPS (The Internet Cash Payment System)	No
<input type="checkbox"/> CyberSource ICsV2 Payment Services	No
<input type="checkbox"/> GlobalCommerce Payment Gateway	No
<input checked="" type="checkbox"/> e-ValuCheck - Accept checks for immediate shipment	Yes
<input type="checkbox"/> Moneris e-SELECT Payment Service	No
<input type="checkbox"/> COD	No
<input type="checkbox"/> Check Payment	No
<input type="checkbox"/> Authorize.Net Payment Services v3.1	No
<input type="checkbox"/> debit-it! - Full Service Online Electronic Check Processing	No



Step by Step Instructions-Continued

4. The e-ValuCheck Site Information blue hyper-link will appear at the top of the page in the Modules section. Click the e-ValuCheck Site Information hyper-link.
5. Leave the Exchange ID blank, and enter your e-ValuCheck assigned Merchant ID and password.
6. Leave the URL as is: <https://evalucheck.net/default>.
7. Type in a custom Transaction Error Message that will be displayed for your customer on the payment information screen in an event that a payment will be rejected by e-ValuCheck.
8. Review the Merchant Information, and correct as desired, then click Update.

Miva Merchant Administration: administrator - Microsoft Internet Explorer

Address: http://evan2/Merchant2/admin.mvc?Session_ID=61e14cc8281c681efd7e91414bfafaa&

MAIN DOCS SUPPORT LOGOUT

Refresh Main Domain Settings Store Selection Layout Users Modules Wizards Stores Add Store test Wizards Groups Countries States Categories Products Marketing Attribute Templates Upsale Inventory Affiliate Configuration Shipping Configuration Payment Configuration Order Fulfillment Configuration Logging Configuration System Extension Configuration Customers Availability Groups Price Groups Order Processing Utilities Switch to Simple Administration About Miva Merchant Logout

Payment Configuration

Modules [e-ValuCheck Site Information](#) [e-ValuCheck Merchant Information](#)

If you have already received your e-ValuCheck account information and password, please see the login and configuration information below. If you have customer service or technical questions, contact us at support@evalucheck.com or call (949) 635-6380.

Exchange ID:

Merchant ID:

Password:

URL:

Transaction Error Message:

Done Local intranet



Step by Step Instructions-Continued

9. Click the e-ValuCheck Merchant Information hyper-link located at the top of the page in the Modules section immediately to the right of the previously selected e-ValuCheck Site Information hyper-link (See screen shot next page).
10. Review and edit the Merchant Information as needed.
11. Review and edit the Technical Contact information.
12. Edit the return URLs. Once the user has completed the e-ValuCheck check validation, e-ValuCheck will redirect the user back to an INTERNET MERCHANT URL. Three INTERNET MERCHANT URLs will need to be established:
 - **Hidden Confirmation URL** - A 'hidden' script that serves as a redundant confirmation of the successful transaction. Prior to the user being redirected back to INTERNET MERCHANT success/approval page, the e-ValuCheck application server will HTTP POST to a 'hidden' INTERNET MERCHANT script the confirmed transaction confirmation.
 - **Success Redirect URL** - A script that displays a check verification approval page, confirmation of the consumer's INTERNET MERCHANT account balance and offering the user a link or links to several of the INTERNET MERCHANT member web sites.
 - **Reject Redirect URL** - A script that displays a PICK ANOTHER PAYMENT option for those users who are not confirmed by the system (bad risk consumers).

No need to change the Operator1, Operator2, and Coefficient values.

Examples:

Hidden Confirmation URL

<http://www.ebagswholesale.com/Merchant2/evalcheckp.mvc?>

<https://secure.hosting.com/ebagswholesale/Merchant2/evalcheckp.mvc?>

Success Redirect URL

<http://www.ebagswholesale.com/Merchant2/evalcheckki.mvc?>

<https://secure.hosting.com/ebagswholesale/Merchant2/evalcheckki.mvc?>

Reject Redirect URL

<http://www.ebagswholesale.com/Merchant2/evalcheckki.mvc?>

<https://secure.hosting.com/ebagswholesale/Merchant2/evalcheckki.mvc?>



Step by Step Instructions-Continued

Merchant Address1: 12433 Main
Merchant Address2: PO BOX 123
Merchant City: San Diego
Merchant State: California
Merchant Postal Code: 92121
Merchant Phone: 555/555/2222
Merchant Email: BJangels@RoadRunner.com

Technical Contact First Name: Evan
Technical Contact Last Name: Tatarzycki
Technical Contact Email: Evan@RoadRunner.com

Hidden Confirmation URL: http://6.115.228.253/Merchant2/evalcheckp.mvc?
Success Redirect URL: http://216.115.228.253/Merchant2/evalcheck
Reject Redirect URL: http://216.115.228.253/Merchant2/evalcheck

Operator1: -
Operator2: +
Coefficient: 2.45

Update Reset

13. Click Update.

14. You are ready to begin testing the e-ValuCheck payment process. Initially, the e-ValuCheck module is in TEST mode. You may conduct a purchase transaction through the MIVA store, select Check Payment as the payment option, and complete an e-ValuCheck payment. If you encounter any problems, call the e-ValuCheck support line at (877) 382-5824.



Step by Step Instructions-Continued

15. When testing is completed successfully and you are ready to begin accepting LIVE check payments, logon to the e-ValuCheck merchant administration interface located at <https://evalucheck.net/merchant.html>.
16. Click the Active button to ACTIVATE your account. You may revert back to TEST mode in the future by logging on again and clicking the TEST mode button.

Merchant Administration - Microsoft Internet Explorer

File Edit View Favorites Tools Help

Address https://evalucheck.net/reports_user

e-Commerce³

Welcome Evan! Today is Friday, June 13, 2003

Main Menu

- Welcome Screen
- Account Activity**
- Reports
- Setup**
- Transaction Settings
- Merchant Information
- Change Password
- Notification Settings
- Test Mode
- Fraud Settings
- Advanced Settings
- Support**
- F.A.Q
- Documentation
- Account Billing
- Payout Report
- Contact Support
- Logout**
- Logout

Welcome Screen

Welcome to the e-ValuCheck Merchant Administration area.

Today's Activity Summary

Transactions: **0**
Dollars: **\$0.00**

Quick Links

[Contact Support Page](#)

e-ValuCheck News

- e-Commerce³ to launch repetitive payment option in December, stay tuned for more information.
- e-ValuCheck in the news.

Activate your account.

Click the Activate button to activate your account: **13003**

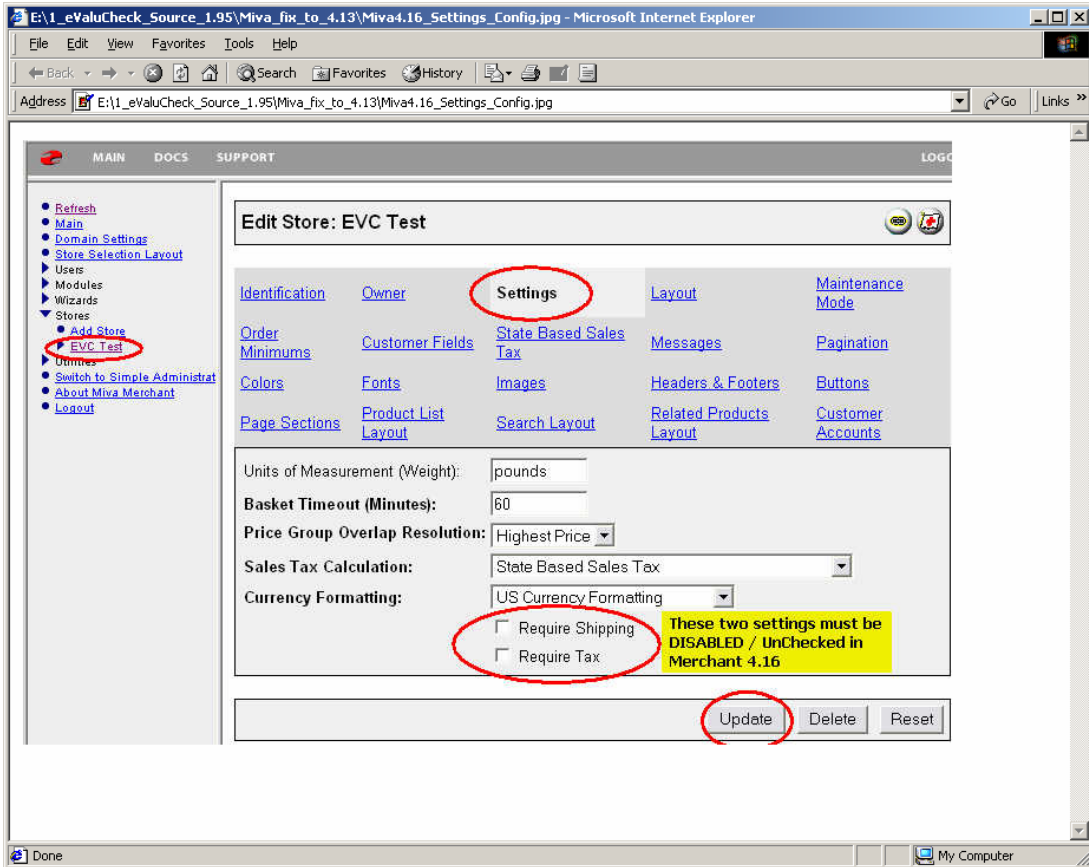
[BACK](#)

Copyright © 2002 - e-ValuCheck - All Rights Reserved

Done Internet



Note: You MUST disable the "Require Shipping" and "Require Tax" settings located in admin/store/settings tab for **Merchant v4.16**. These settings are **OPTIONAL** in version **4.2x and greater!**



Congratulations, you have now completed the setup of the e-ValuCheck payment module. We suggest that you conduct a test transaction by running through a test checkout. Remember that you can use the Test Mode/Production Mode preference to control whether the transaction will be processed or not.

NOTE: You must be in production mode for customer transactions to be properly processed. **ALL TEST TRANSACTIONS WILL NOT BE PROCESSED OR PAID.**

